

RUNWAY, TAXIWAY AND APRON EDGE LIGHT CONSTRUCTION NOTES

- SUPPLY AND INSTALL NEW FIXTURE C/W NEW PULLPIT, TRANSFORMER, SECONDARY CORD AND ALL REQUIRED ACCESSORIES.
- NEW PRIMARY CABLING / DUCTS TO BE INSTALLED IN NEW TRENCH.
- SUPPLY, INSTALL AND CONNECT NEW GROUND ROD IN EVERY FOURTH PULLPIT AND CONNECT TO GROUND COUNTERPOISE.
- EXISTING EDGE LIGHT SYSTEM IS TO REMAIN OPERATIONAL WHILE NEW CONSTRUCTION TAKES PLACE. MAINTAIN EXISTING SYSTEM OPERATIONAL AND PROVIDE TEMPORARY CABLING, AS REQUIRED.
- ALL NEW TAXIWAY EDGE LIGHTING ON TAXIWAY C TO BE CONNECTED TO EXISTING TAXIWAY / APRON EDGE LIGHTING CIRCUIT (CCR CELL #6).

SIGN CONSTRUCTION NOTES

- SUPPLY AND INSTALL NEW AIRFIELD SIGNS C/W SIGN, SIGN BASE, SIGN LEGS, FRANGIBLE COUPLINGS, MOUNTING FLANGES, PULLPIT, SECONDARY CONDUIT / CABLING, PRIMARY CONDUIT / CABLING, GROUND RODS / GROUNDING, ISOLATING TRANSFORMER, CONNECTOR KITS AND ALL OTHER ACCESSORIES AND WORK.
- CONNECT NEW SIGNS TO NEW CCT'S AS INDICATED IN NEW AIRFIELD SIGN SCHEDULE AND AS SHOWN ON LAYOUT DRAWINGS ELA1 TO ELA5.
- MAXIMUM INSTALLED HEIGHT ABOVE GRADE TO TOP OF SIGN: 180cm.
- PERPENDICULAR DISTANCE FROM DEFINED TAXIWAY EDGE TO NEAR SIDE OF SIGN: 5 - 11m (AGN IIIA). EDGE OF TAXIWAY TO BE DETERMINED BY MEASUREMENT FROM TAXIWAY CENTRELINE (NOT EDGE OF PAVEMENT).
- PERPENDICULAR DISTANCE FROM DEFINED RUNWAY EDGE TO NEAR SIDE OF RUNWAY EXIT SIGN: 3 - 11m (AGN IIIA). EDGE OF RUNWAY TO BE DETERMINED BY MEASUREMENT FROM RUNWAY CENTRELINE (NOT EDGE OF PAVEMENT).
- RUNWAY EXIT SIGNS TO BE LOCATED MINIMUM 30m FROM POINT OF TANGENCY BETWEEN RUNWAY AND TAXIWAY CENTRELINES (AGN IIIA).
- PAINT MARKING LOCATIONS TO BE CONFIRMED ON SITE.
- HOLD LINE LOCATIONS TO BE CONFIRMED ON SITE.

GROUNDING NOTES

- USE CRIMPED CONNECTION TO GROUND RODS.

CABLES, PULLPITS AND MISCELLANEOUS EQUIPMENT REMOVALS NOTES

- EXISTING OBSOLETE CABLES IN DUCTS TO BE REMOVED AND RETURNED TO OWNER.
- EXISTING DIRECT BURIED OBSOLETE CABLES TO BE ABANDONED IN PLACE. CUT AND REMOVE ALL PORTIONS OF CABLE ABOVE GROUND. CUT OFF DIRECT BURIED CABLES AS FAR BELOW GRADE AS POSSIBLE.
- EXISTING OBSOLETE PULLPITS TO BE REMOVED, WITH VOIDS BACKFILLED AND COMPACTED. RETURN TO OWNER.

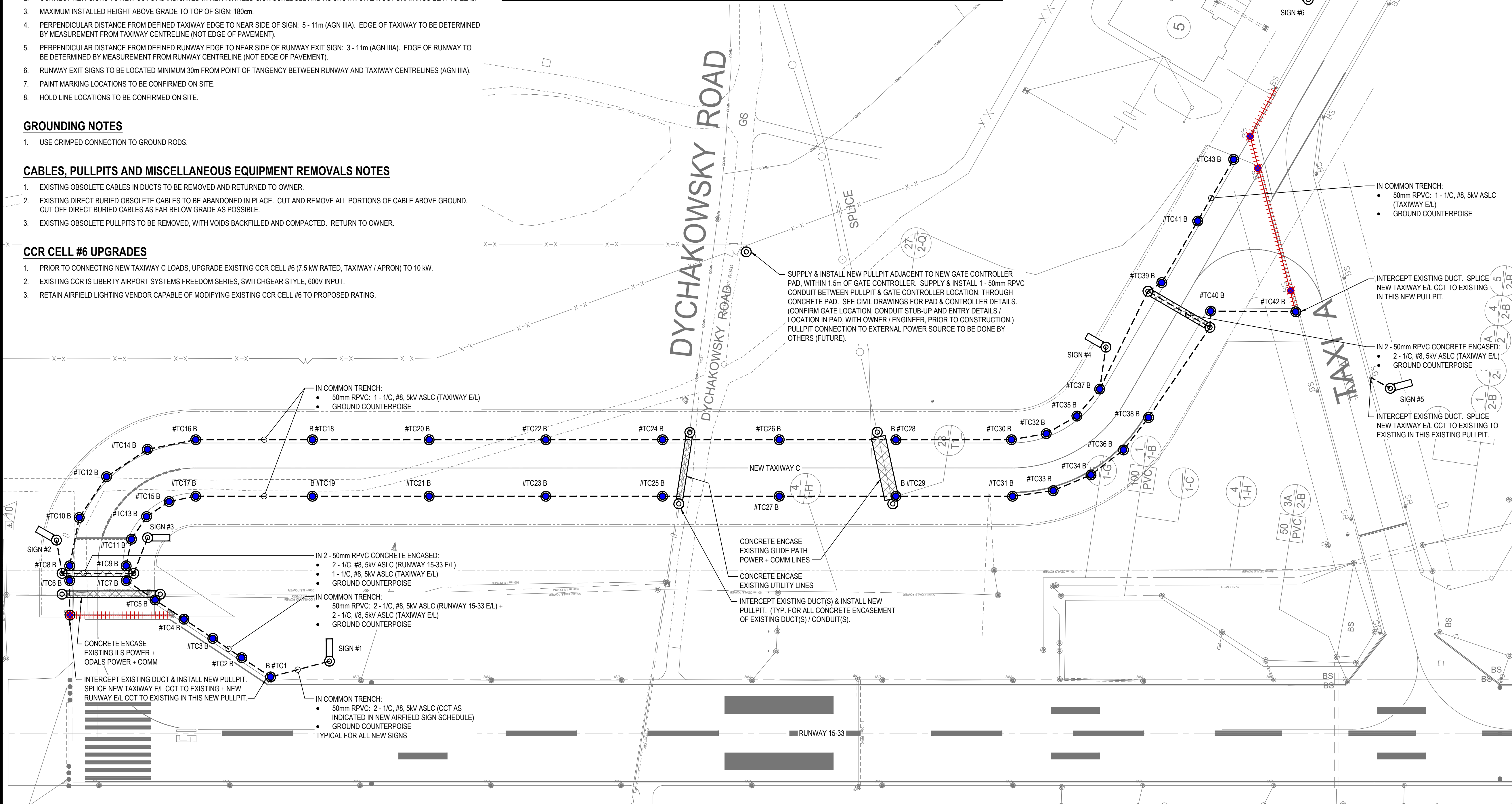
CCR CELL #6 UPGRADES

- PRIOR TO CONNECTING NEW TAXIWAY C LOADS, UPGRADE EXISTING CCR CELL #6 (7.5 kW RATED, TAXIWAY / APRON) TO 10 kW.
- EXISTING CCR IS LIBERTY AIRPORT SYSTEMS FREEDOM SERIES, SWITCHGEAR STYLE, 600V INPUT.
- RETAIN AIRFIELD LIGHTING VENDOR CAPABLE OF MODIFYING EXISTING CCR CELL #6 TO PROPOSED RATING.

SIGN NO.	SIGN FACE	FACE HEIGHT (mm)	CHARACTER HEIGHT (mm)	BACKGROUND COLOUR	CHARACTER COLOUR	CCT TO CONNECT TO	NOTES
1	C →	450	300	YELLOW	BLACK	TAXIWAY E/L CCT	-
2	33-15 C	450	300 300	RED BLACK	WHITE YELLOW	RUNWAY E/L CCT #A	-
3	C 33-15	450	300 300	BLACK RED	YELLOW WHITE	RUNWAY E/L CCT #B	DOUBLE SIDED
	C	450	300	BLACK	YELLOW		
4	↑ A C A ↘	450	300 300 300	YELLOW BLACK YELLOW	BLACK YELLOW BLACK	TAXIWAY E/L CCT	DOUBLE SIDED
	C	450	300	BLACK	YELLOW		
5	↖ C A A ↗	450	300 300 300	YELLOW BLACK YELLOW	BLACK YELLOW BLACK	TAXIWAY E/L CCT	-
6	↑ C A A	450	300 300 300	YELLOW YELLOW BLACK	BLACK BLACK YELLOW	TAXIWAY E/L CCT	-

LEGEND

- NEW BLUE LED TAXIWAY EDGE LIGHT, PULLPIT MOUNTED
- NEW LED AIRFIELD SIGN
- NEW PULLPIT
- - - NEW CABLE / CONDUIT, AS NOTED
- ▨ NEW CONCRETE ENCASED DUCT CROSSING
- EXISTING BLUE LED TAXIWAY EDGE LIGHT TO BE REMOVED
- +++++ EXISTING CABLE / CONDUIT TO BE REMOVED



KEY PLAN

TETRA TECH

CONSULTANTS

GIBBINGS CONSULTING LTD

SEAL

PERMIT

REV	ISSUED FOR	DATE	APPD
2	TENDER	2026.03.16	RG
1	100% REVIEW	2026.03.05	RG
0	PRELIMINARY REVIEW	2026.01.29	RG

Northwest Regional Airport Terrace-Kitimat

NEW TAXIWAY C

TERRACE-KITIMAT (YXT)

PROJECT NO : TRN AIRP03972-01

CONTRACT NO :

DRAFTED BY : KLL

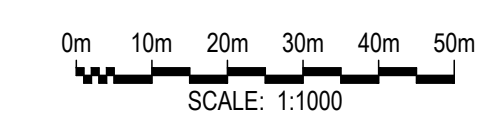
DESIGNED BY : RG

CHECKED BY : RG

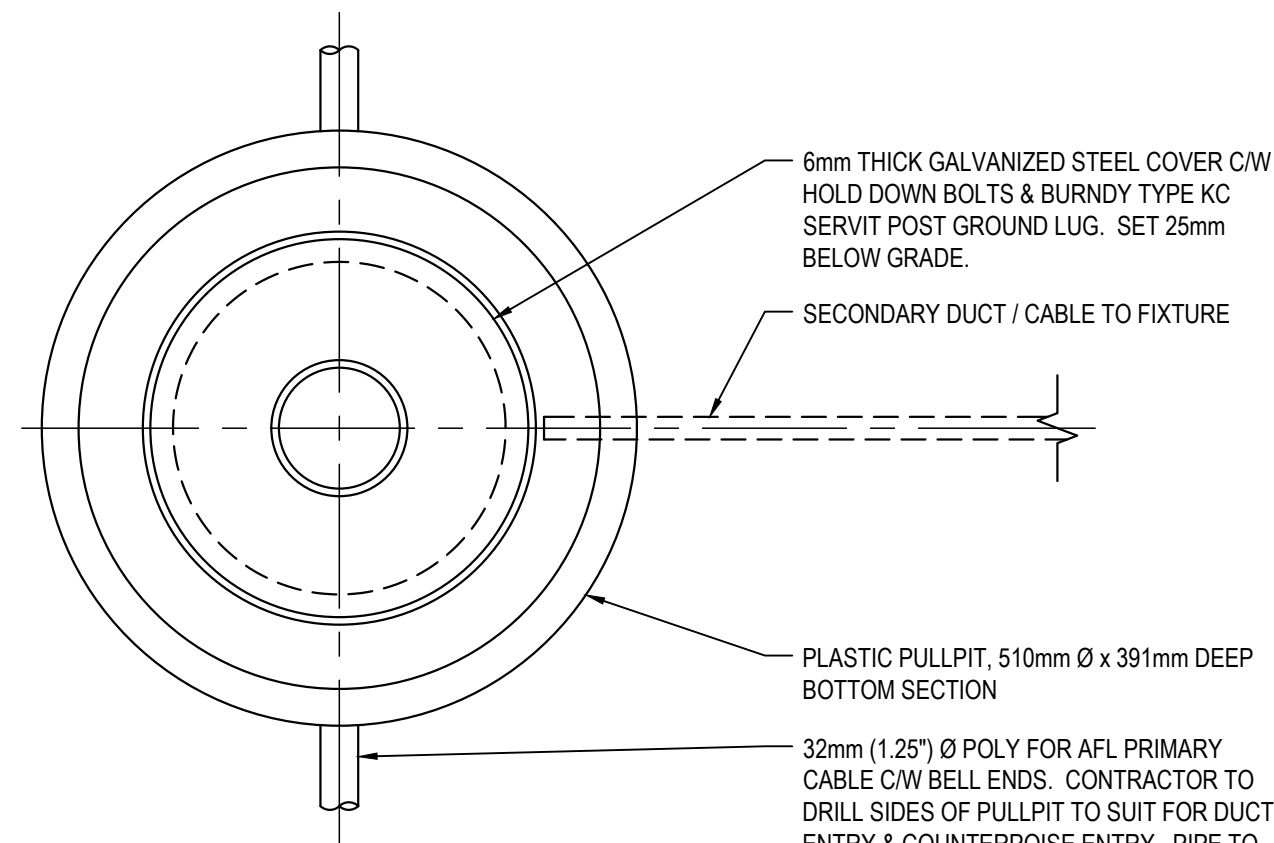
APPROVED BY : RG

GENERAL NOTES:

- DRAWINGS BASED ON INFORMATION PROVIDED BY TETRA TECH.
- THIS DRAWING IS NOT TO BE USED FOR CONSTRUCTION PURPOSES UNTIL REVISION NOTED "ISSUED FOR CONSTRUCTION".
- ALL UNITS ARE IN MILLIMETRES UNLESS NOTED OTHERWISE.
- ALL EXISTING SURFACE/SUB-SURFACE FACILITIES/UTILITIES WITHIN CONSTRUCTION LIMITS TO BE PROTECTED DURING CONSTRUCTION.
- ALL AIRPORT SURFACES TO BE KEPT CLEAN OF CONSTRUCTION DEBRIS AND FOD. CLEAN SURFACES OF CONSTRUCTION DEBRIS AND FOD AS REQUIRED.
- COMPLETE ALL INSTALLATIONS TO COMPLY WITH:
 - CANADIAN ELECTRICAL CODE, C22.1 (LATEST EDITION)
 - TP 312, 5th EDITION
- REFER TO ELECTRICAL SPECIFICATIONS FOR FURTHER EQUIPMENT / INSTALLATION REQUIREMENTS.

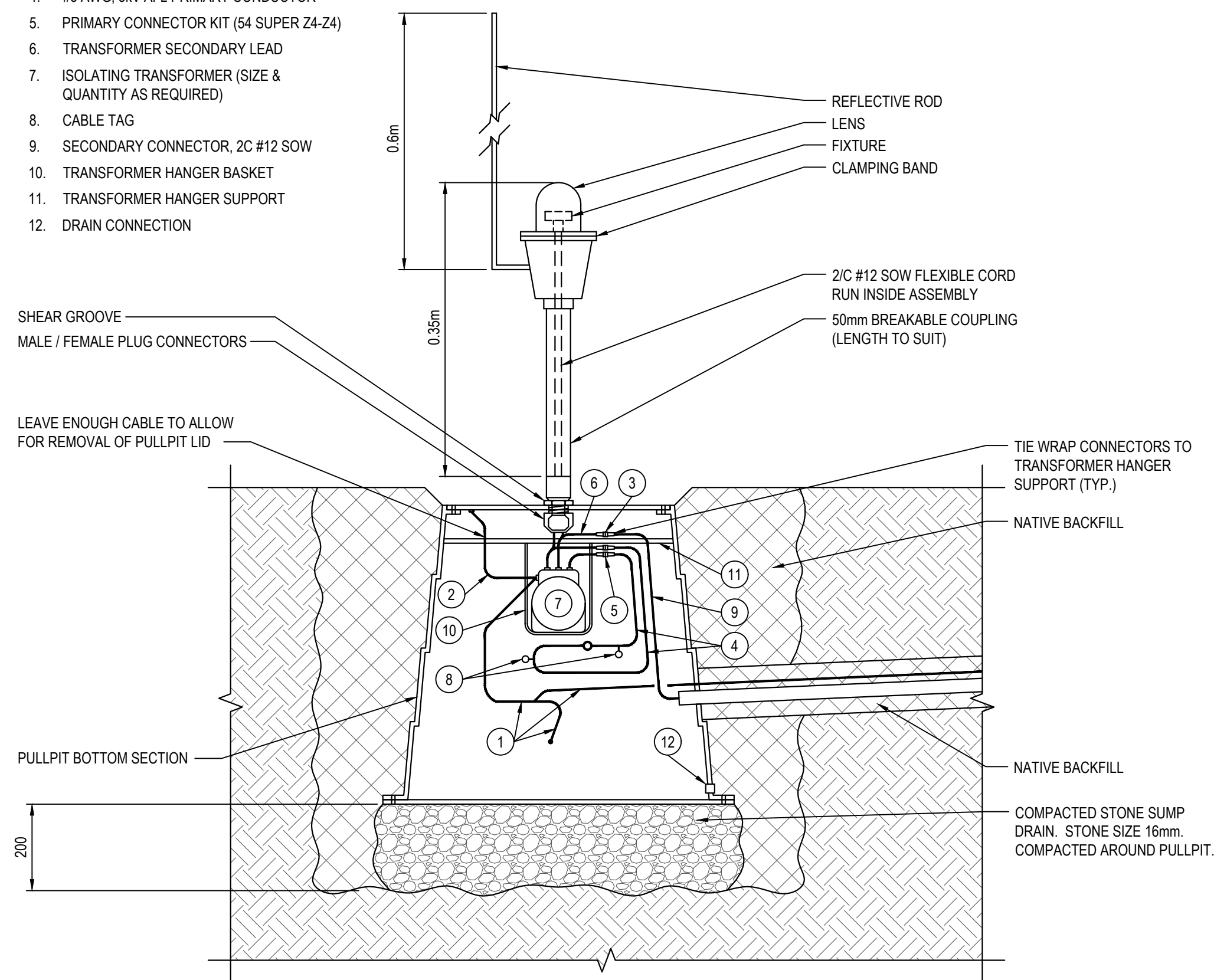


CADD FILE: ELA.dwg PLOTTED DATE: 2026/03/16 AT 07:53:59 PLOTTED BY: KLL

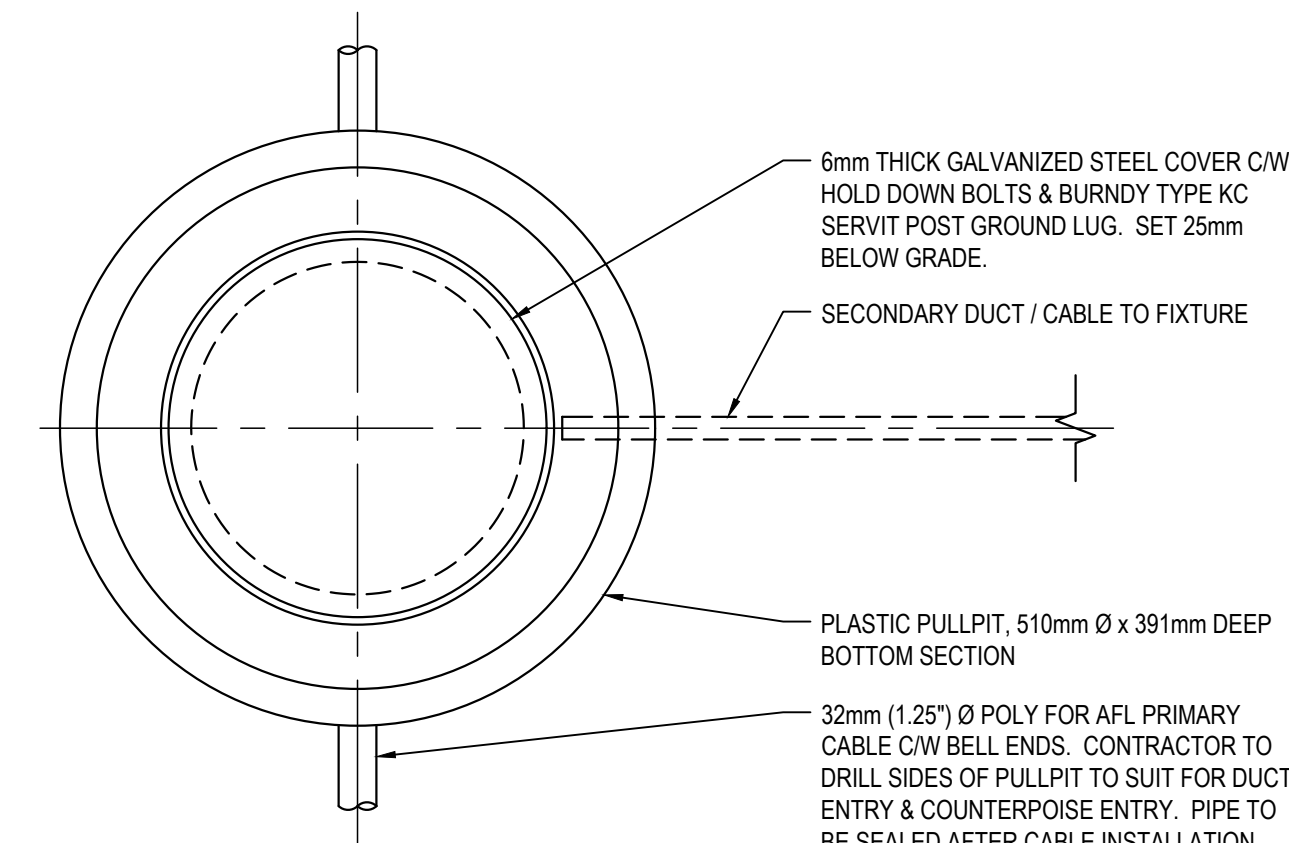


LEGEND:

1. GROUND COUNTERPOISE, #8 SDBC
2. BRAIDED GROUND STRAP
3. TRANSFORMER SECONDARY CONNECTOR
4. #8 AWG, 5kV AFL PRIMARY CONDUCTOR
5. PRIMARY CONNECTOR KIT (54 SUPER Z4-Z4)
6. TRANSFORMER SECONDARY LEAD
7. ISOLATING TRANSFORMER (SIZE & QUANTITY AS REQUIRED)
8. CABLE TAG
9. SECONDARY CONNECTOR, 2C #12 SOW
10. TRANSFORMER HANGER BASKET
11. TRANSFORMER HANGER SUPPORT
12. DRAIN CONNECTION

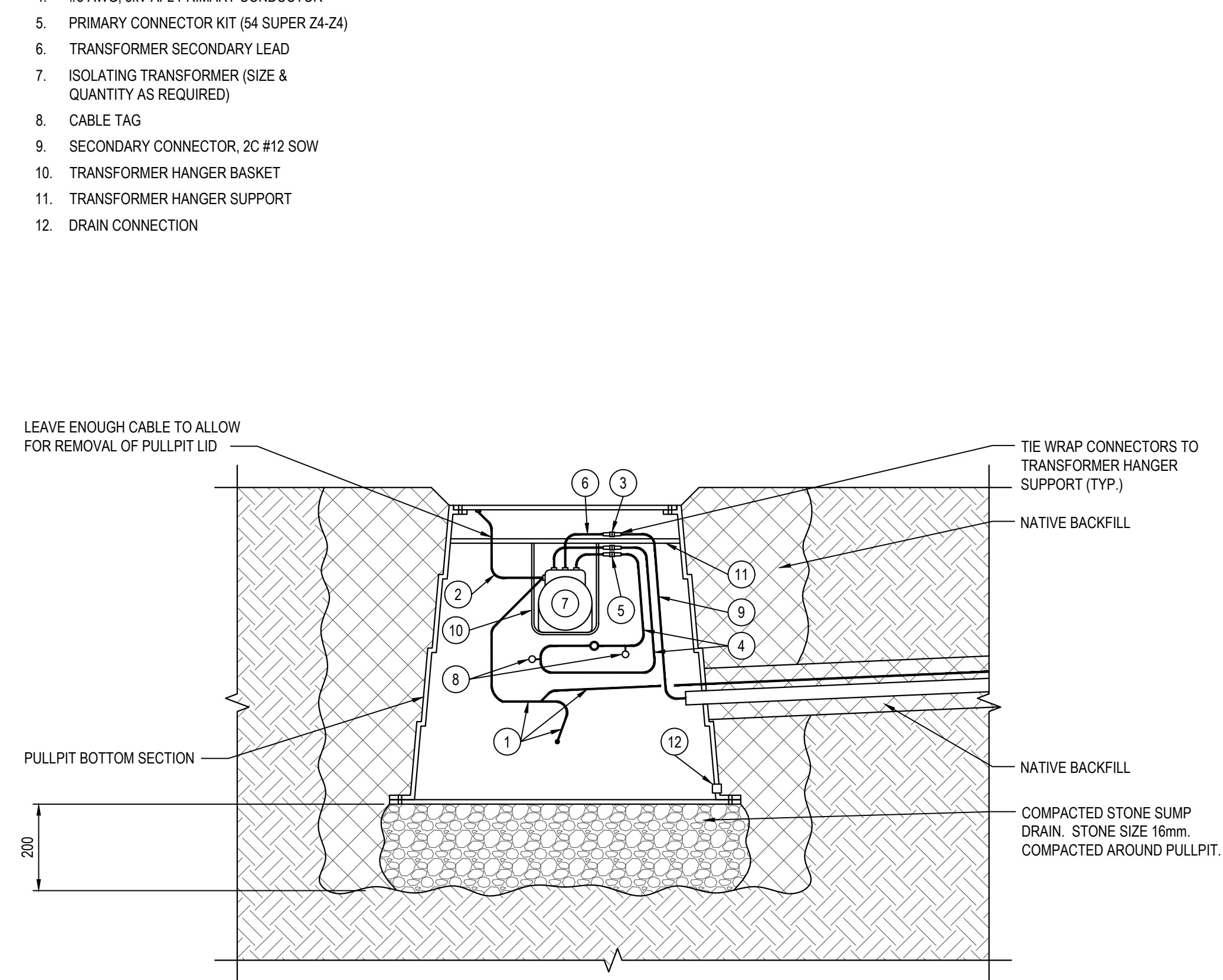


LED EDGE LIGHT MOUNTED ON PULLPIT LID

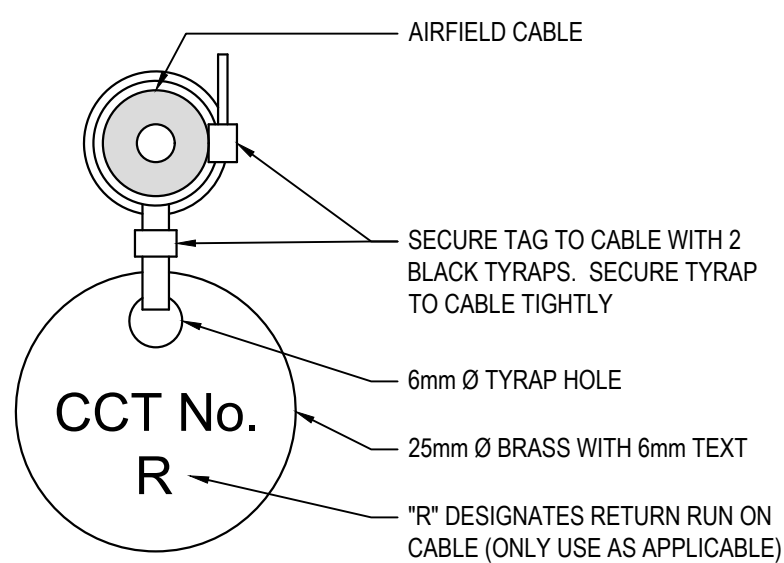


LEGEND:

1. GROUND COUNTERPOISE, #8 SDBC
2. BRAIDED GROUND STRAP
3. TRANSFORMER SECONDARY CONNECTOR
4. #8 AWG, 5kV AFL PRIMARY CONDUCTOR
5. PRIMARY CONNECTOR KIT (54 SUPER Z4-Z4)
6. TRANSFORMER SECONDARY LEAD
7. ISOLATING TRANSFORMER (SIZE & QUANTITY AS REQUIRED)
8. CABLE TAG
9. SECONDARY CONNECTOR, 2C #12 SOW
10. TRANSFORMER HANGER BASKET
11. TRANSFORMER HANGER SUPPORT
12. DRAIN CONNECTION



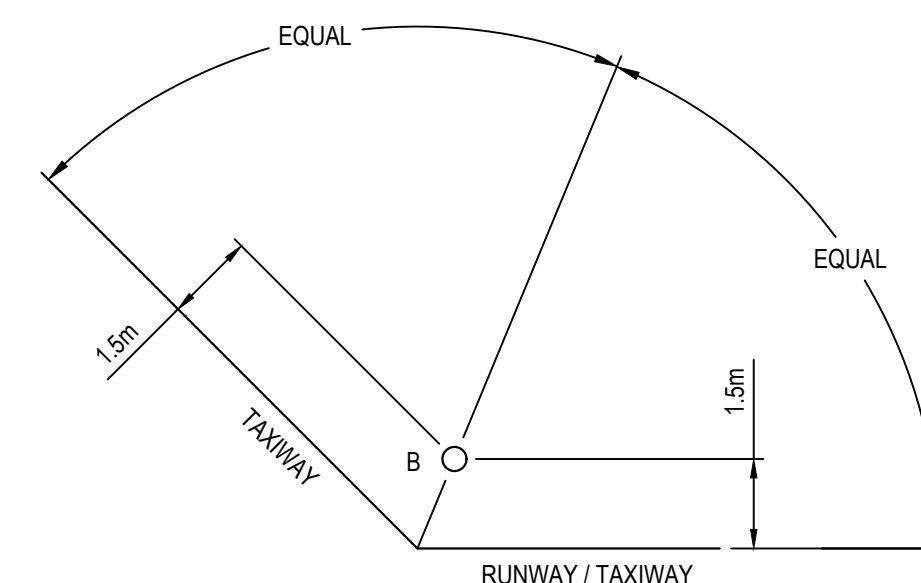
TYPICAL SINGLE DEPTH PULLPIT INSTALLATION



NOTES:

1. TAGS REQUIRED ON EVERY CABLE IN PULLPITS / MANHOLES, ON BOTH SIDES OF EVERY CONNECTION.
2. TAG TEXT TO BE REVIEWED WITH OWNER / ENGINEER PRIOR TO MANUFACTURE.

CABLE TAG



RUNWAY / TAXIWAY JUNCTION OR TAXIWAY / TAXIWAY JUNCTION

GENERAL NOTES:

1. DRAWINGS BASED ON INFORMATION PROVIDED BY TETRA TECH.
2. THIS DRAWING IS NOT TO BE USED FOR CONSTRUCTION PURPOSES UNTIL REVISION NOTED "ISSUED FOR CONSTRUCTION".
3. ALL UNITS ARE IN MILLIMETRES UNLESS NOTED OTHERWISE.
4. ALL EXISTING SURFACE/SUB-SURFACE FACILITIES/UTILITIES WITHIN CONSTRUCTION LIMITS TO BE PROTECTED DURING CONSTRUCTION.
5. ALL AIRPORT SURFACES TO BE KEPT CLEAN OF CONSTRUCTION DEBRIS AND FOD. CLEAN SURFACES OF CONSTRUCTION DEBRIS AND FOD AS REQUIRED.
6. COMPLETE ALL INSTALLATIONS TO COMPLY WITH:
 - CANADIAN ELECTRICAL CODE, C22.1 (LATEST EDITION)
 - TP 312, 5th EDITION
7. REFER TO ELECTRICAL SPECIFICATIONS FOR FURTHER EQUIPMENT / INSTALLATION REQUIREMENTS.

KEY PLAN



CONSULTANTS



SEAL



SEAL

PERMIT

REV	ISSUED FOR	DATE	APPD
2	TENDER	2026.03.16	RG
1	100% REVIEW	2026.03.05	RG
0	PRELIMINARY REVIEW	2026.01.29	RG



NEW TAXIWAY C

TERRACE-KITIMAT (YXT)

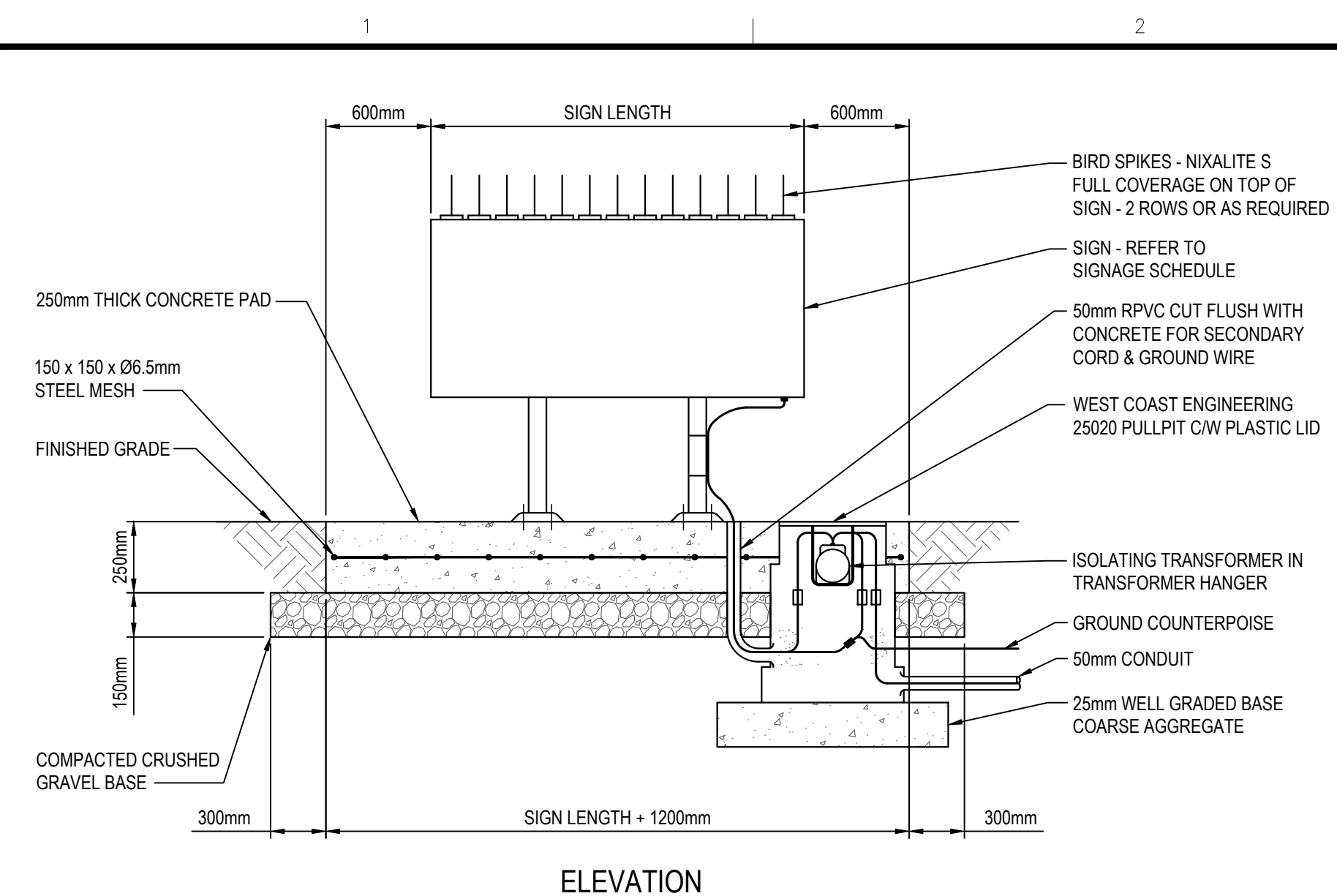
PROJECT NO : TRN AIRP03972-01
 CONTRACT NO :
 DRAFTED BY : KLL
 DESIGNED BY : RG
 CHECKED BY : RG
 APPROVED BY : RG

**ELECTRICAL DETAILS
SHEET 1 OF 2**

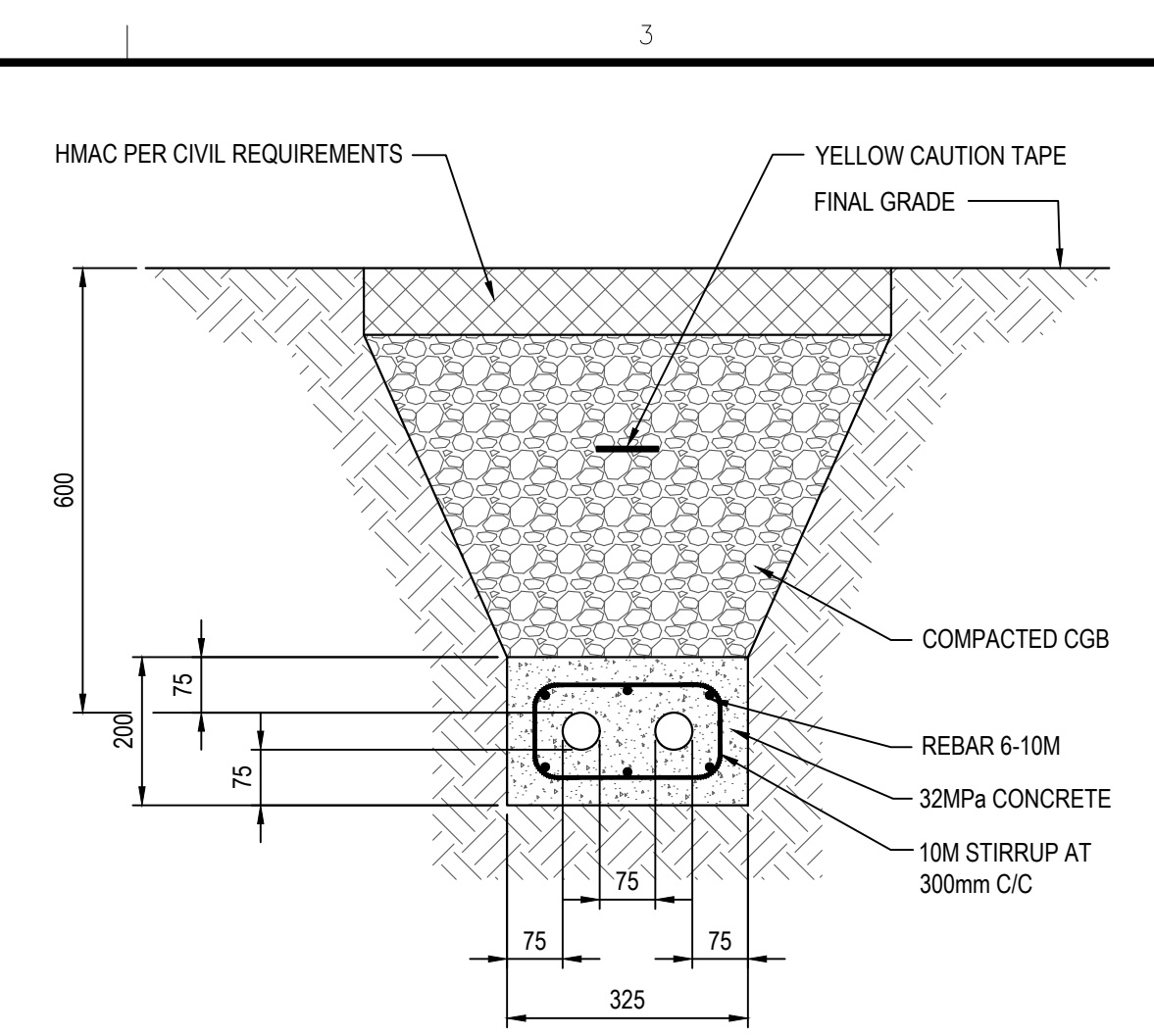
DRAWING NO :

EDE1

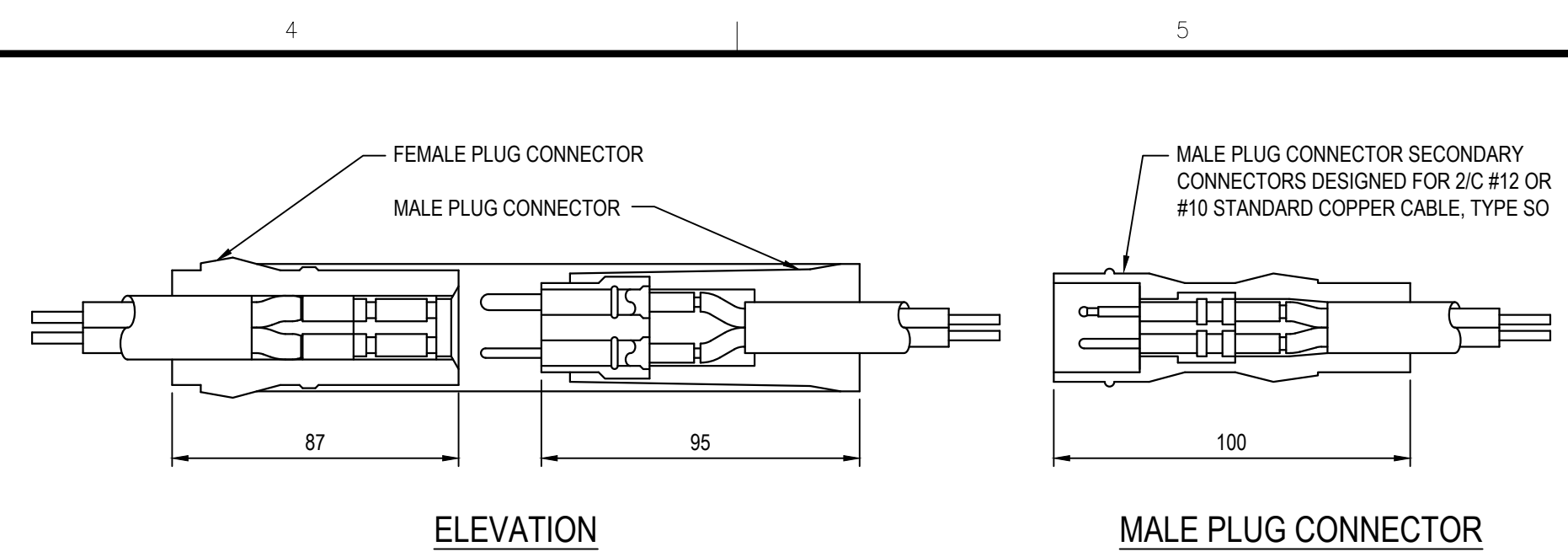
CADD FILE: EDE.dwg PLOTTED DATE: 2026/03/16 AT 07:54:00 PLOTTED BY: KLL



ELEVATION

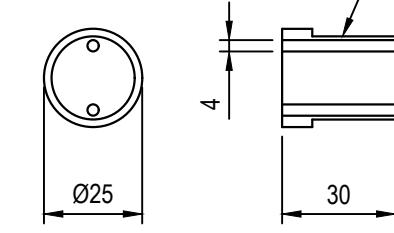


TYPICAL 2 - 50 CONCRETE ENCASED DUCTBANK DETAIL

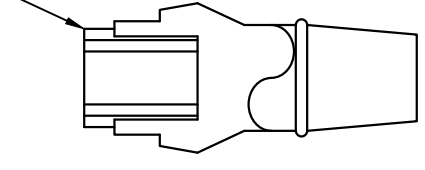


ELEVATION

MALE PLUG CONNECTOR

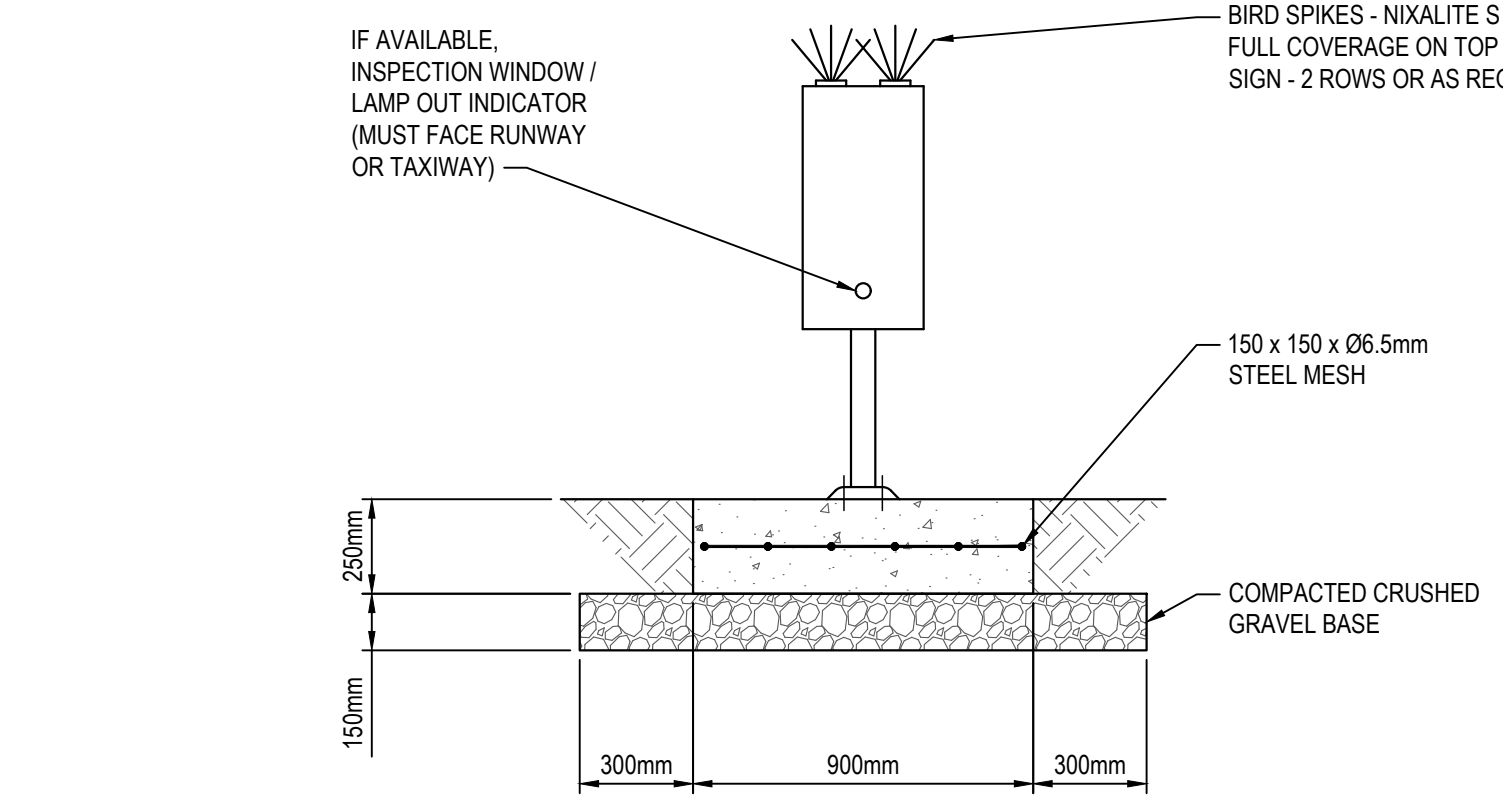


PLUG INSERT



PLUG INSERT INSTALLATION

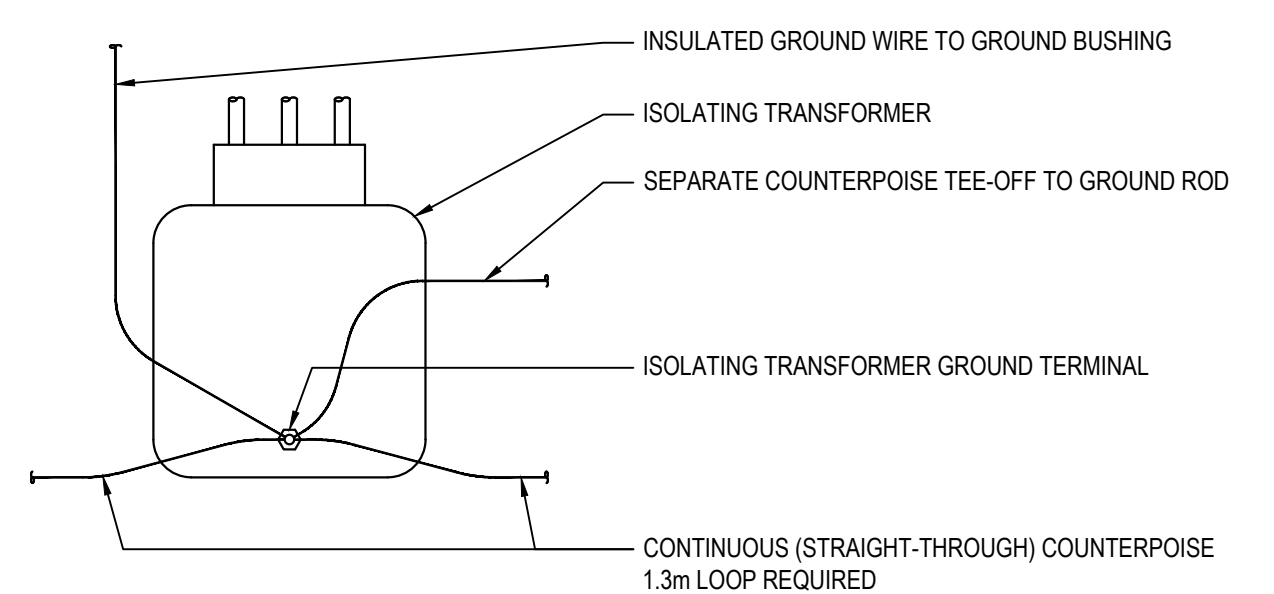
TYPICAL SECONDARY CONNECTOR DETAIL



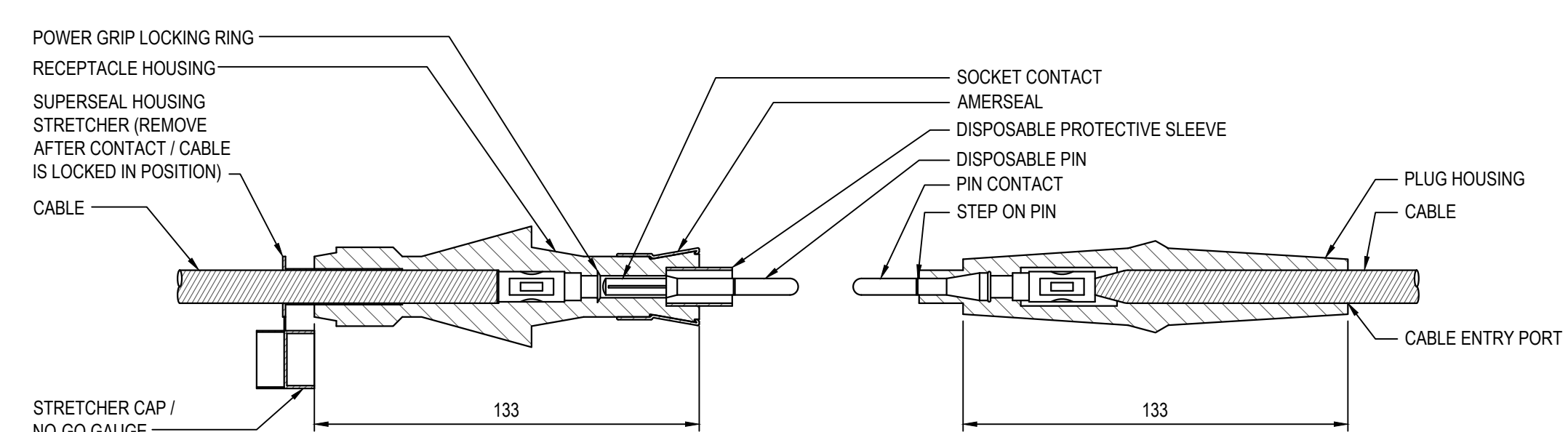
END VIEW

- NOTES:**
1. CONCRETE PAD LENGTH IS SIGN LENGTH + 1200.
 2. INSTALL ANCHOR BOLTS AFTER CONCRETE HAS HARDENED.
 3. SUPPLY, INSTALL AND CONNECT NEW GROUND ROD.

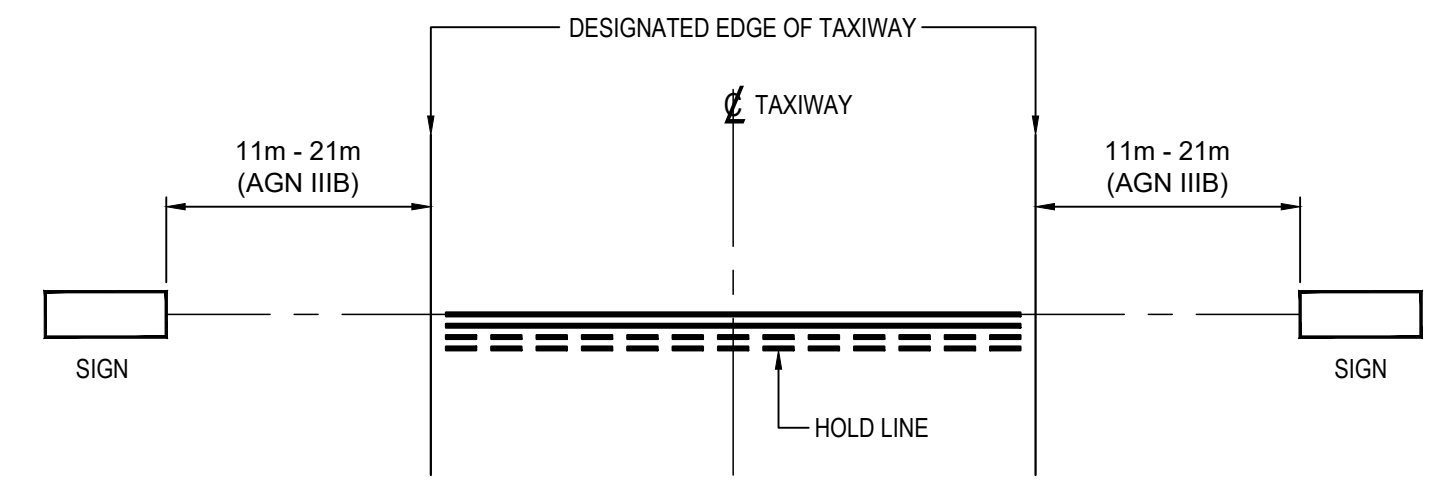
AIRFIELD GUIDANCE SIGN



ISOLATING TRANSFORMER & COUNTERPOISE GROUNDING

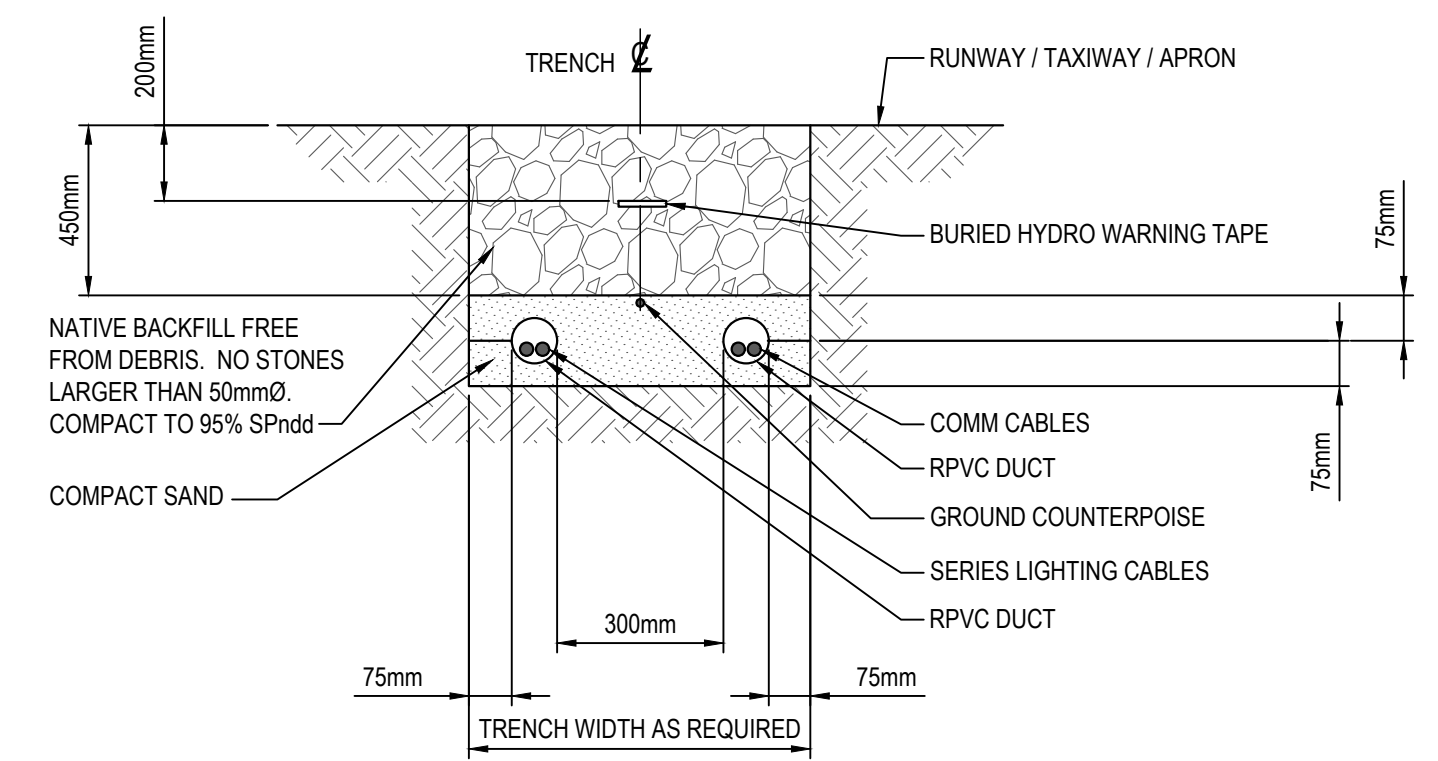
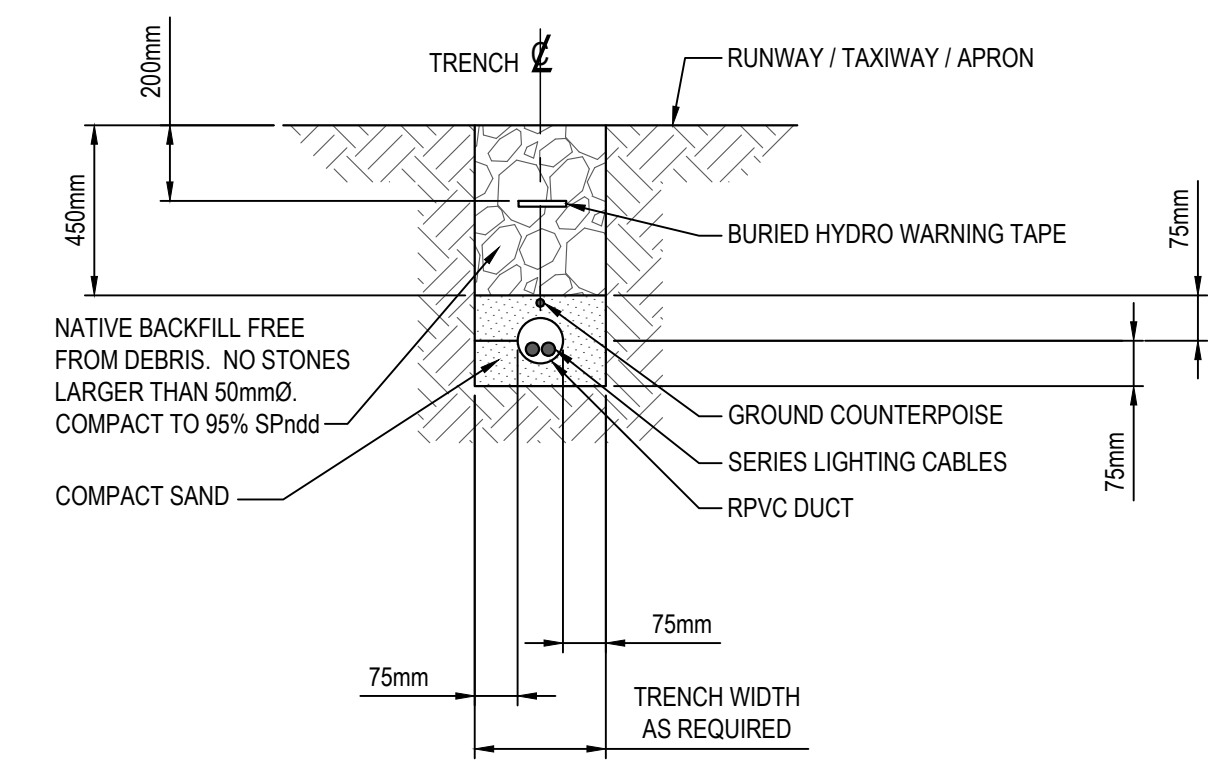


TYPICAL PRIMARY CONNECTOR DETAIL



MANDATORY HOLD SIGN LAYOUT

- NOTES:**
1. SIGN TO BE LOCATED 11m - 21m FROM DESIGNATED EDGE OF TAXIWAY (AGN IIIB). EDGE OF TAXIWAY TO BE DETERMINED BY MEASUREMENT FROM TAXIWAY CENTRELINE (NOT EDGE OF PAVEMENT).



- NOTES:**
1. MAINTAIN 75mm SPACING BETWEEN POWER DUCTS IN COMMON TRENCH.
 2. MAINTAIN 300mm SPACING BETWEEN POWER AND COMMUNICATIONS DUCTS IN COMMON TRENCH.

TRENCH PROFILE

- GENERAL NOTES:**
1. DRAWINGS BASED ON INFORMATION PROVIDED BY TETRA TECH.
 2. THIS DRAWING IS NOT TO BE USED FOR CONSTRUCTION PURPOSES UNTIL REVISION NOTED "ISSUED FOR CONSTRUCTION".
 3. ALL UNITS ARE IN MILLIMETRES UNLESS NOTED OTHERWISE.
 4. ALL EXISTING SURFACE/SUB-SURFACE FACILITIES/UTILITIES WITHIN CONSTRUCTION LIMITS TO BE PROTECTED DURING CONSTRUCTION.
 5. ALL AIRPORT SURFACES TO BE KEPT CLEAN OF CONSTRUCTION DEBRIS AND FOD. CLEAN SURFACES OF CONSTRUCTION DEBRIS AND FOD AS REQUIRED.
 6. COMPLETE ALL INSTALLATIONS TO COMPLY WITH:
 - CANADIAN ELECTRICAL CODE, C22.1 (LATEST EDITION)
 - TP 312, 5th EDITION
 7. REFER TO ELECTRICAL SPECIFICATIONS FOR FURTHER EQUIPMENT / INSTALLATION REQUIREMENTS.

KEY PLAN



SEAL

SEAL

PERMIT

REV	ISSUED FOR	DATE	APPD
2	TENDER	2026.03.16	RG
1	100% REVIEW	2026.03.05	RG
0	PRELIMINARY REVIEW	2026.01.29	RG



NEW TAXIWAY C

TERRACE-KITIMAT (YXT)

PROJECT NO : TRN AIRP03972-01

CONTRACT NO :

DRAFTED BY : KLL

DESIGNED BY : RG

CHECKED BY : RG

APPROVED BY : RG

ELECTRICAL DETAILS SHEET 2 OF 2

DRAWING NO : **EDE2**

CADD FILE: EDE.dwg PLOTTED DATE: 2026/03/16 AT 07:54:01 PLOTTED BY: KLL